

MOUNTING GEAR FOR WIRELESS ACCESS POINTS PORTFOLIO (AS ON FEB 2013)



Wireless Access Point Mounting Gear

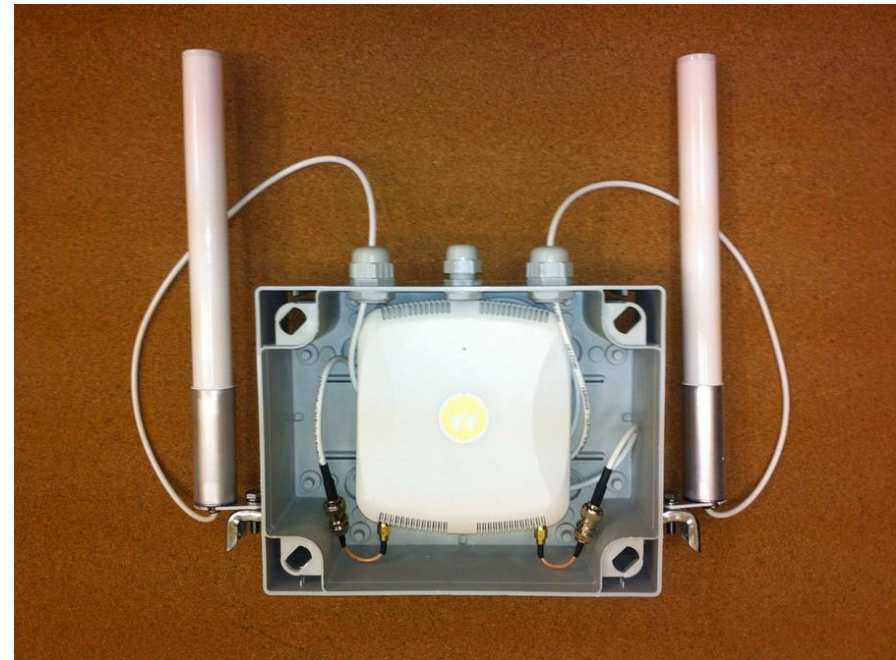
Access Point Placement normally requires “some and comes from some where” additional gear. Now introducing out of box mounting kits to be used with all very new Motorola APs portfolio

Benefits:

- Easy of mounting
- Quick in installation
- Automatic and correct antenna placement
- Dust proof IP56

Where to use:

- Warehouse
 - Freeze stocking area
 - Manufacturing Plant
 - Light outdoor* environments
- * - no direct rain or snow



Wireless Access Point Mounting Gear

Part Number	Description	AP model much	Price List, Euro
MOUNTBOX-S0	AP enclosure IP56 rated for internal antenna ap versions only AP621, AP6521 (includes patch cord 0.5 m, single port plug, no ext. antenna mounting clips)	AP621, AP6521 Internal ant.	59,00
MOUNTBOX-S	AP enclosure IP56 rated AP621, AP6521 (includes patch cord 0.5 m, single port plug, with ext. antenna mounting clips)	AP621, AP6521 External ant.	65,00
MOUNTBOX-M	AP enclosure IP56 rated for internal antenna ap versions AP650, AP6532, AP622, AP6522 (includes patch cord 0.5 m, single port plug, no ext. antenna mounting clips)	AP650, AP6532, AP622, AP6522 Internal ant.	65,00
MOUNTBOX-M4	AP enclosure IP56 rated for internal antenna ap versions AP622, AP6522 (includes patch cord 0.5 m, single port plug, 4 ext. antenna mounting clips)	AP622, AP6522 External ant.	77,00
MOUNTBOX-M6	AP enclosure IP56 rated for internal antenna ap versions AP650, AP6532 (includes patch cord 0.5 m, single port plug, 6 ext. antenna mounting clips)	AP650, AP6532 External ant.	77,00